

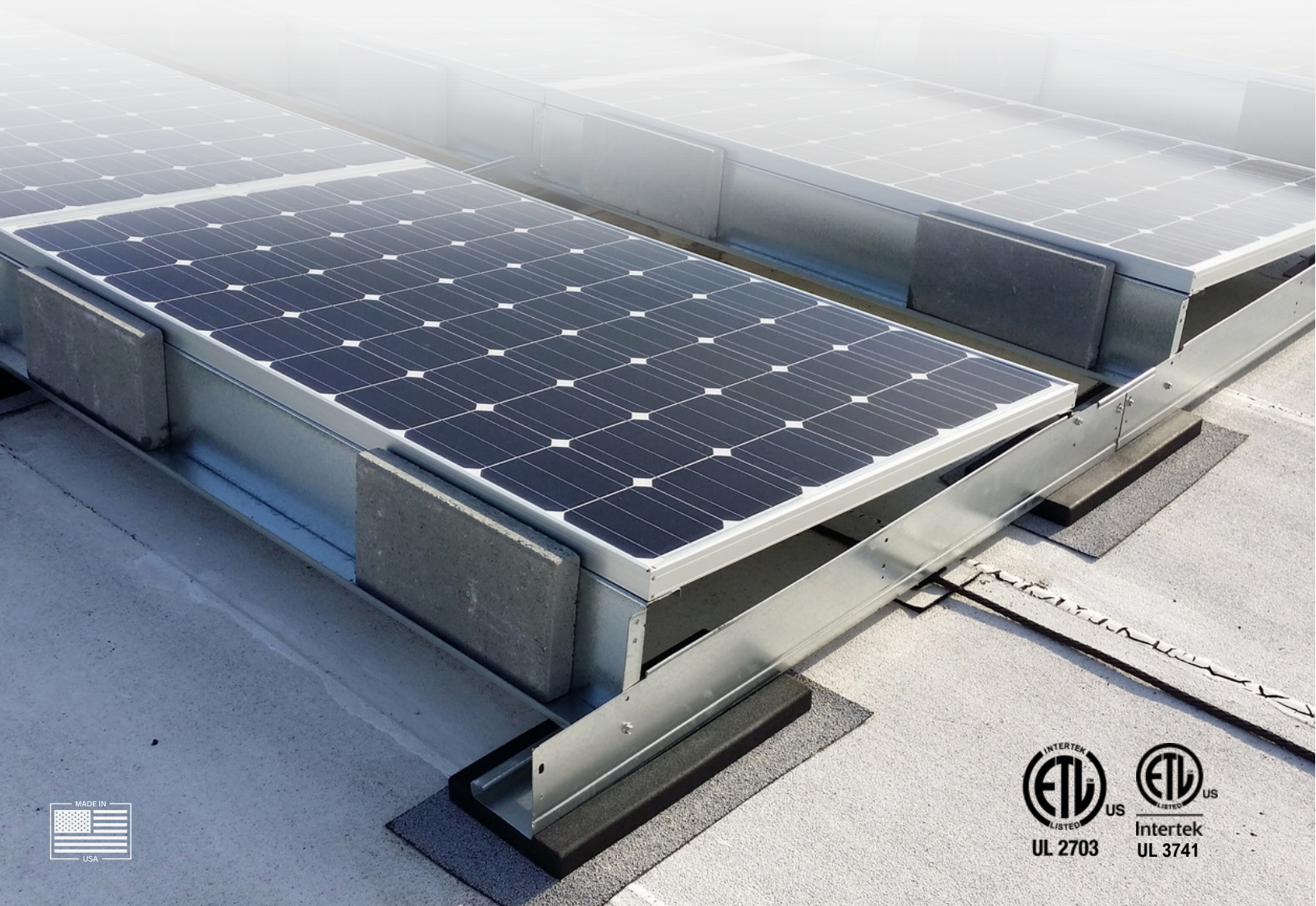


19410 JETTON ROAD SUITE 220 CORNELIUS, NC 28031
704-659-7474 | INFO@DCESOLAR.COM
WWW.DCESOLAR.COM

ECO-TOP

ROOF-TOP SOLUTION

ELEVATING THE FUTURE OF SOLAR



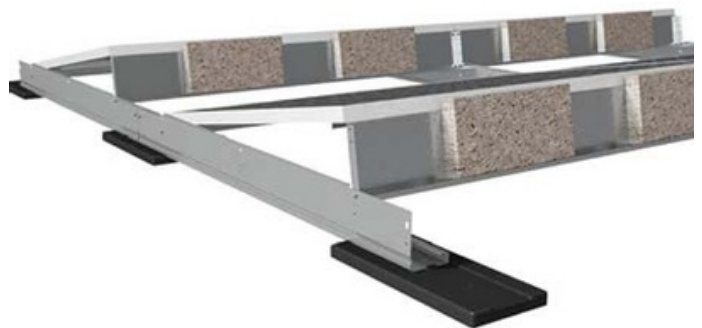
ECO-TOP

ROOF-TOP SOLUTION

The Eco-Top's modular design makes installation and system design fast and easy.

- The most effective wire support system available
- Integrated (UL approved) grounding
- Class A fire rated (UL approved)
- **UL 3741 certification** when used with approved Type 1 PV modules
- Module tilting for ease of maintenance
- SEAOC compliant
- Fast to install

INTEGRAL WIND DEFLECTOR minimizes system loading and also functions as a ballast tray, providing a location to place ballast in the array.



STRUCTURAL COMPONENTS

Structural members are galvanized to the ASTM A653 standard. Additionally, entire assembly has been rated as Class A fire rated by UL for fire safety



FASTENERS

- Serrated flange heads
- Vibration resistance and integral grounding and bonding
- All nuts are wax coated to eliminate galling

MOLDED RUBBER PAD

Durable recycled rubber ballast pads provide a safe mounting surface with a high coefficient of friction. This results in reduced system loads, while protecting all equipment by minimizing vibration. In most cases the rubber pad eliminates the need for a slip sheet.

- UV Resistant (extended lifespan)
- Recycled Rubber (LEED credits)



ECO-TOP

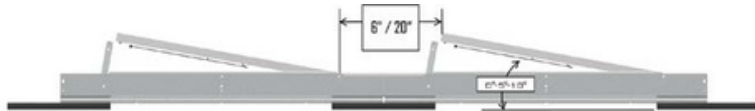
ROOF-TOP SOLUTION

GROUNDING AND BONDING via serrated hardware certified to UL SDT 2703 (listing available upon request). It is recommended that a ILSCO GBL-4DBT ground lug be used. *Grounding lug attaches to the N-S Beam.*

WIRE CLIPS UV-rated flexible wire ties with easy to install push clips. Wire clips can be mounted anywhere on the rear panel beam. (UL Approved)

PV MODULE TILTING

Modules can quickly and securely be tilted for ease of wiring and maintenance.



INTERGRATED WIRE SUPPORT

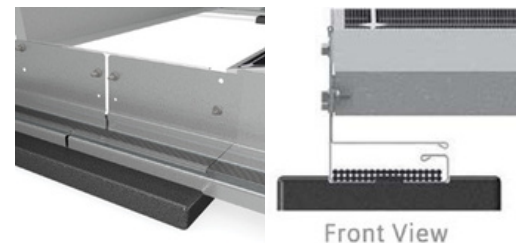
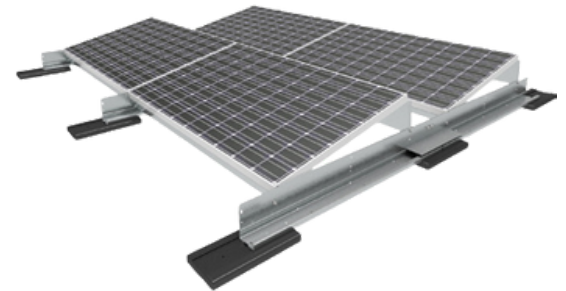
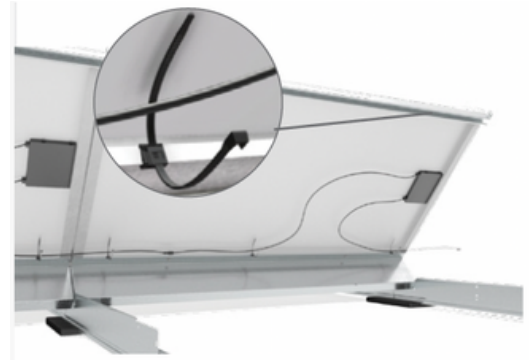
Flexible, UV protected Wire Support provided on every panel. Wires can be easily added before or after panel assembly.

TECHNICAL SPECIFICATIONS

Tilt Angle	5 / 10 Degrees
Module Suitability	All Major Brands
Shade Spacing	6in - 18in
Warranty	20 Years



PRODUCT IS MADE FROM AMERICAN STEEL, FABRICATED IN AMERICA, ALONG WITH CRUMB RUBBER PADS FABRICATED IN THE US. FASTENING HARDWARE CAN BE SUPPLIED FROM THE US UPON REQUEST



19410 JETTON ROAD SUITE 220 CORNELIUS, NC 28031
704-659-7474 | INFO@DCESOLAR.COM |
WWW.DCESOLAR.COM

DCE Solar is a market leader in industrial grade solar mounting and consulting. DCE designs, engineers, and manufactures the leading product line in the C&I and utility market.

DCE continues to set the gold standard with innovative solutions created and perfected by a trademarked, world-class engineering and support team.



19410 JETTON ROAD SUITE 220 CORNELIUS, NC 28031
704-659-7474 | INFO@DCESOLAR.COM
WWW.DCESOLAR.COM

ECO-TOP HD

ROOF-TOP SOLUTION

ELEVATING THE FUTURE OF SOLAR



ECO-TOP HD

ROOF-TOP SOLUTION

The ECO-TOP HD (High Density) features a roof membrane friendly design that increases capacity by up to 20%

- More wattage per square foot
- Retains membrane warranties with major roof manufacturers by utilizing
- rubber pads that do not compromise the integrity of the existing roof
- **UL 3741 certification** when used with approved Type 1 PV modules

INTEGRAL WIND DEFLECTOR minimize wind load to reduce the overall system load.

MOLDED RUBBER PAD

Durable recycled rubber ballast pads provide a safe mounting surface with a high coefficient of friction. This results in reduced system loads, while protecting all equipment by minimizing vibration. In most cases the rubber pad eliminates the need for a slip sheet.

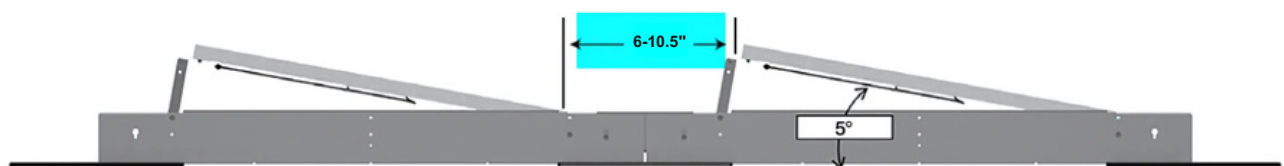
- UV Resistant (extended lifespan)
- Recycled Rubber (LEED credits)

GROUNDING AND BONDING via serrated hardware certified to UL SDT 2703 (listing available upon request). It is recommended that a ILSCO GBL-4DBT ground lug be used.

Grounding lug attaches to the N-S Beam.

PV MODULE TILTING

Modules can quickly and securely be tilted for ease of wiring and maintenance.



ECO-TOP HD

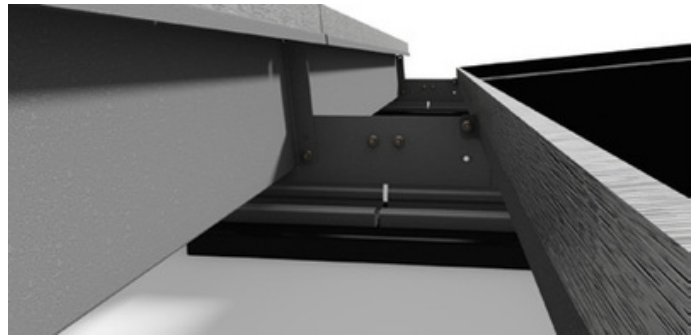
ROOF-TOP SOLUTION

STRUCTURAL COMPONENTS AND FASTENERS are galvanized to the ASTM A653 standard. All fasteners are stainless steel and have serrated flange heads unless otherwise noted. This provides vibration resistance and integral grounding and bonding.

NORTH-SOUTH CONNECTIVITY minimizes loading and provides built in wire management eliminating the need for third party products.

FASTENERS

- Serrated flange heads
- Vibration resistance and integral grounding and bonding
- All nuts are wax coated to eliminate galling



TECHNICAL SPECIFICATIONS

Tilt Angle	5 / 10 Degrees
Module Suitability	All Major Brands
Shade Spacing	6in - 10.5in
Warranty	20 Years



19410 JETTON ROAD SUITE 220 CORNELIUS, NC 28031
704-659-7474 | INFO@DCESOLAR.COM | WWW.DCESOLAR.COM

DCE Solar is a market leader in industrial grade solar mounting and consulting. DCE designs, engineers, and manufactures the leading product line in the C&I and utility market.

DCE continues to set the gold standard with innovative solutions created and perfected by a trademarked, world-class engineering and support team.



PRODUCT IS MADE FROM AMERICAN STEEL, FABRICATED IN AMERICA, ALONG WITH CRUMB RUBBER PADS FABRICATED IN THE US. FASTENING HARDWARE CAN BE SUPPLIED FROM THE US UPON REQUEST