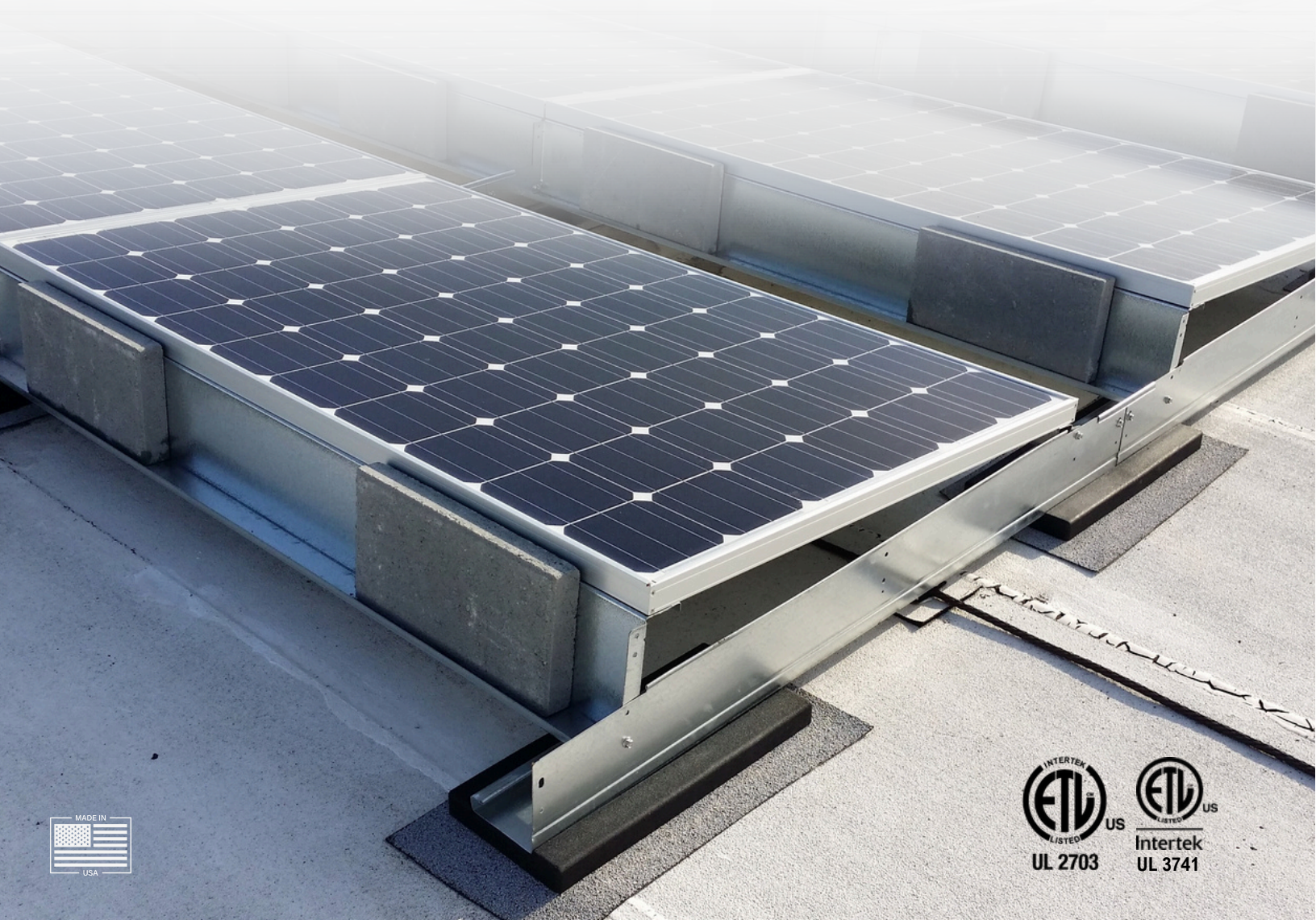


# ECO-TOP

## ROOF-TOP SOLUTION

ELEVATING THE FUTURE OF SOLAR

---



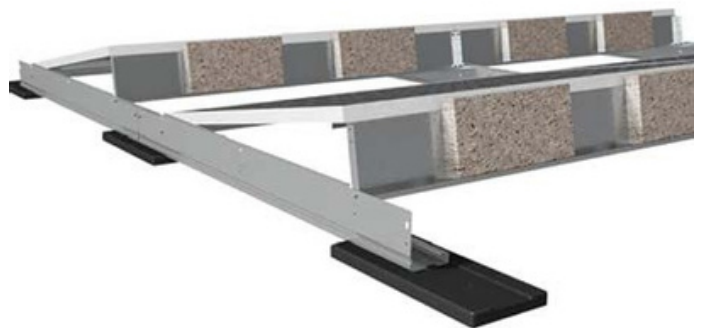
# ECO-TOP

## ROOF-TOP SOLUTION

The Eco-Top's modular design makes installation and system design fast and easy.

- The most effective wire support system available
- Integrated (UL approved) grounding
- Class A fire rated (UL approved)
- **UL 3741 certification** when used with approved Type 1 PV modules
- Module tilting for ease of maintenance
- SEAOC compliant
- Fast to install

**INTEGRAL WIND DEFLECTOR** minimizes system loading and also functions as a ballast tray, providing a location to place ballast in the array.



### STRUCTURAL COMPONENTS

Structural members are galvanized to the ASTM A653 standard. Additionally, entire assembly has been rated as Class A fire rated by UL for fire safety



### FASTENERS

- Serrated flange heads
- Vibration resistance and integral grounding and bonding
- All nuts are wax coated to eliminate galling

### MOLDED RUBBER PAD

Durable recycled rubber ballast pads provide a safe mounting surface with a high coefficient of friction. This results in reduced system loads, while protecting all equipment by minimizing vibration. In most cases the rubber pad eliminates the need for a slip sheet.

- UV Resistant (extended lifespan)
- Recycled Rubber (LEED credits)





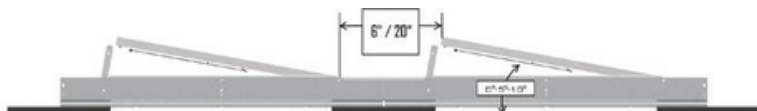
# ECO-TOP

## ROOF-TOP SOLUTION

**GROUNDING AND BONDING** via serrated hardware certified to UL SDT 2703 (listing available upon request). It is recommended that a ILSCO GBL-4DBT ground lug be used. *Grounding lug attaches to the N-S Beam.*

**WIRE CLIPS** UV-rated flexible wire ties with easy to install push clips. Wire clips can be mounted anywhere on the rear panel beam. (UL Approved)

**PV MODULE TILTING**  
Modules can quickly and securely be tilted for ease of wiring and maintenance.



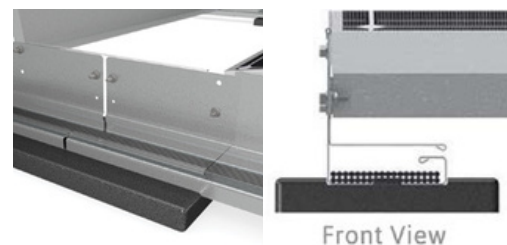
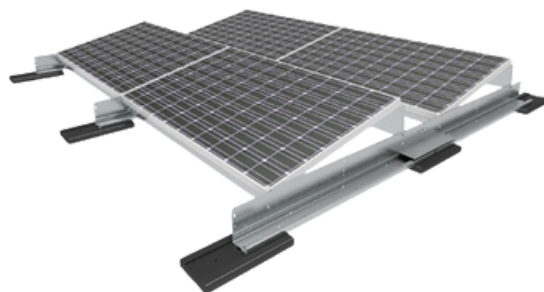
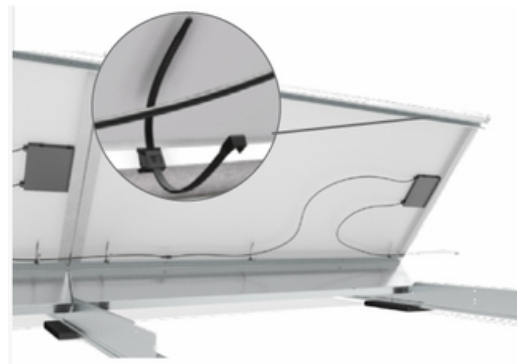
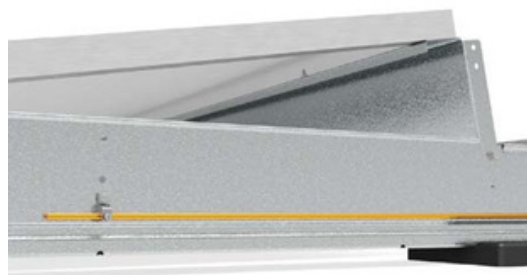
**INTERGRATED WIRE SUPPORT**  
Flexible, UV protected Wire Support provided on every panel. Wires can be easily added before or after panel assembly.

### TECHNICAL SPECIFICATIONS

<b>Tilt Angle</b>	5 / 10 Degrees
<b>Module Suitability</b>	All Major Brands
<b>Shade Spacing</b>	6in - 18in
<b>Warranty</b>	20 Years



PRODUCT IS MADE FROM AMERICAN STEEL, FABRICATED IN AMERICA, ALONG WITH CRUMB RUBBER PADS FABRICATED IN THE US. FASTENING HARDWARE CAN BE SUPPLIED FROM THE US UPON REQUEST



19410 JETTON ROAD SUITE 220 CORNELIUS, NC 28031  
704-659-7474 | INFO@DCESOLAR.COM | WWW.DCESOLAR.COM

DCE Solar is a market leader in industrial grade solar mounting and consulting. DCE designs, engineers, and manufactures the leading product line in the C&I and utility market.

DCE continues to set the gold standard with innovative solutions created and perfected by a trademarked, world-class engineering and support team.